

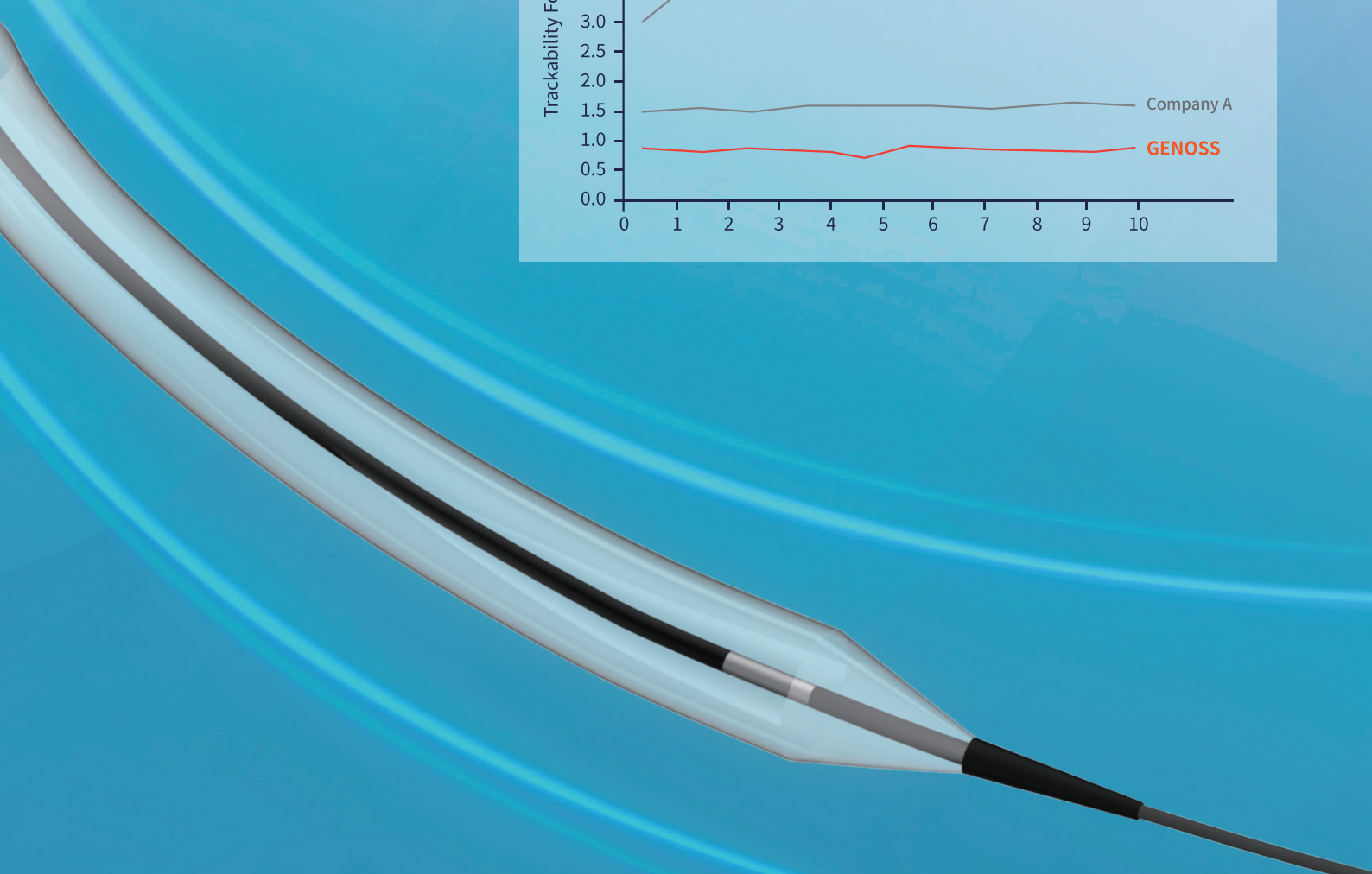
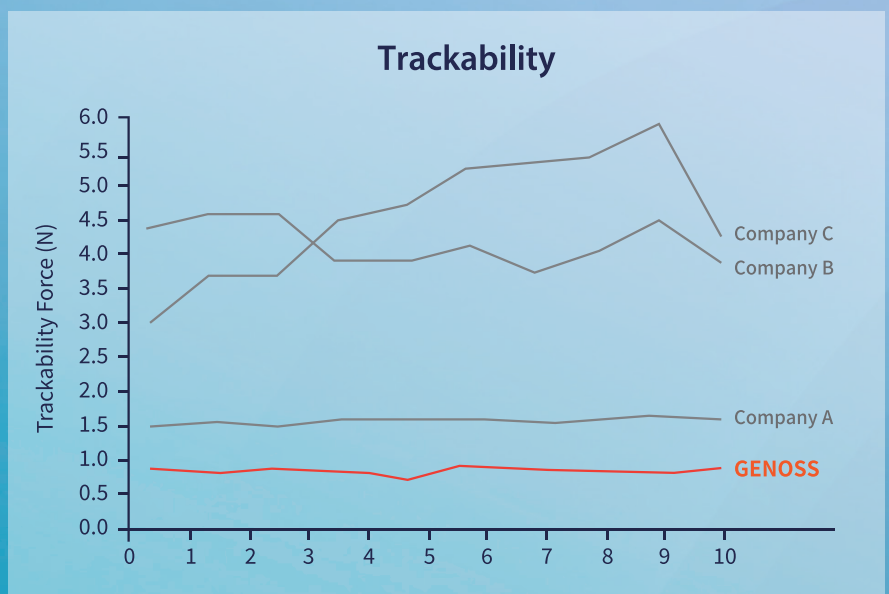
GENOSS

PTCA Balloon Catheter

Excellent entry performance

Self-developed hydrophilic coating surfaces

Low re-folding profile



GENOSS

Hydrophilic coating

- A coating with great trackability and crossability

Specially engineered 3-folded balloon

- Excellent re-wrapping performance for superior re-crossability

Compliance profile

- Assurance of precise balloon inflation by controlled pressure with low compliance property

Small and flexible tip

- Soft and tapered cross tip for crossing challenging lesions easily

Great pushability and trackability

- PTFE coated hypotube combined with long skive for great pushability and trackability

Wide choice

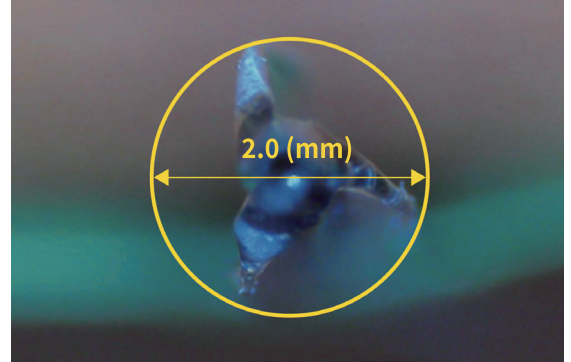
- A wide range of balloon size
- Length : 10 ~35 mm, Diameter : 1.50 ~ 4.00 mm (including quarter sizes)

Specification

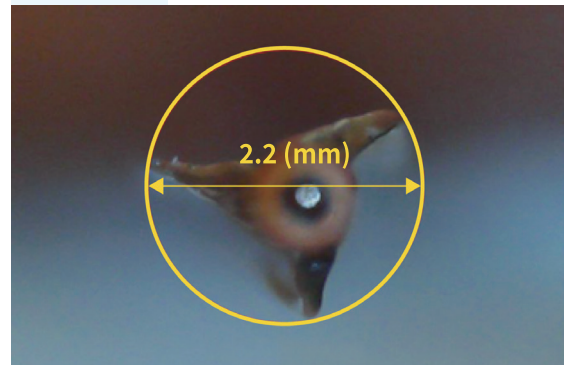
Distal shaft	2.7 Fr (0.92 mm)
Proximal shaft	2.0 Fr (0.68 mm)
Lesion entry profile	0.017" (0.43 mm)
Nominal pressure	7 atm (1.50 mm) / 8 atm (2.00 mm ~ 4.00 mm)
Rated burst pressure	15 atm (1.50 mm) / 16 atm (2.00 mm ~ 3.50 mm) 14 atm (3.75 mm ~ 4.00 mm)
Balloon material	Semi-compliant balloon
Balloon folding	3-folding
Min. guiding catheter ID	5 Fr (0.056")
Max. guide wire OD	0.014" (0.36 mm)
Catheter type	Rapid exchange
Usable length	1450 mm
Shelf life	3 years from sterilization date

After re-folding profile

GENOSS PTCA
2.5 x 15 (mm)



Company A
2.5 x 15 (mm)



Order Information

Balloon Diameter (mm)	Balloon Length (mm)									
	5	10	12	15	18	20	25	30	35	40
1.00	GBC-05-100	GBC-10-100	GBC-12-100	GBC-15-100						
1.10		GBC-10-110								
1.25		GBC-10-125	GBC-12-125	GBC-15-125		GBC-20-125				
1.50		GBC-10-150	GBC-12-150	GBC-15-150		GBC-20-150				
2.00		GBC-10-200	GBC-12-200	GBC-15-200	GBC-18-200	GBC-20-200	GBC-25-200	GBC-30-200	GBC-35-200	GBC-40-200
2.25		GBC-10-225	GBC-12-225	GBC-15-225	GBC-18-225	GBC-20-225	GBC-25-225	GBC-30-225	GBC-35-225	GBC-40-225
2.50		GBC-10-250	GBC-12-250	GBC-15-250	GBC-18-250	GBC-20-250	GBC-25-250	GBC-30-250	GBC-35-250	GBC-40-250
2.75		GBC-10-275	GBC-12-275	GBC-15-275	GBC-18-275	GBC-20-275	GBC-25-275	GBC-30-275	GBC-35-275	GBC-40-275
3.00		GBC-10-300	GBC-12-300	GBC-15-300	GBC-18-300	GBC-20-300	GBC-25-300	GBC-30-300	GBC-35-300	GBC-40-300
3.25		GBC-10-325	GBC-12-325	GBC-15-325	GBC-18-325	GBC-20-325	GBC-25-325	GBC-30-325	GBC-35-325	GBC-40-325
3.50		GBC-12-350	GBC-12-350	GBC-15-350	GBC-18-350	GBC-20-350	GBC-25-350	GBC-30-350	GBC-35-350	GBC-40-350
3.75		GBC-12-375	GBC-12-375	GBC-15-375	GBC-18-375	GBC-20-375	GBC-25-375	GBC-30-375	GBC-35-375	GBC-40-375
4.00		GBC-12-400	GBC-12-400	GBC-15-400	GBC-18-400	GBC-20-400	GBC-25-400	GBC-30-400	GBC-35-400	GBC-40-400
4.50		GBC-12-450	GBC-12-450							
5.00		GBC-12-500	GBC-12-500							

Improved property of end tip for CTO : Low profile and tapered cross tip facilitates crossing calcified lesions